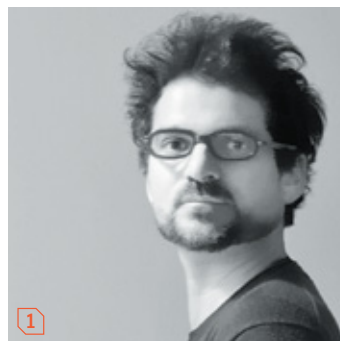




furniture

Jaime Hayon  
for **Magis**



**product** Milà  
**standout** The Spanish designer tops a polyester powder-painted steel base with a stretch of oak veneer—or, for al fresco dining, outdoor-ready HPL or marble. [magisdesign.com](http://magisdesign.com)

Oki Sato  
for **Minotti**



**product** Ring  
**standout** A family of elegant occasional tables from the Nendo founder contrasts straight lines with circles—the latter evident in the Calacatta marble top and the light-bronze-finish brass base's integral loop. [minottiny.com](http://minottiny.com)

Victoria Reynolds and Randy Tuell  
of **Tuell and Reynolds**



**product** Shasta  
**standout** Three tiers (hooray!) form the California firm's cleverly cantilevered end table, whose solid black-iron supports blend with bronze surfaces sand-cast from hand-carved wood originals. [tuellreynolds.com](http://tuellreynolds.com)

Skylar Morgan  
of **Skylar Morgan Furniture + Design**



**product** Arciform  
**standout** Vintage record player cabinets sparked the Atlanta designer's six-drawer bureau, with hand-carved walnut body and matte leather-upholstered fronts atop a sturdy powder-coated steel base. [skylarmorganfurniture.com](http://skylarmorganfurniture.com)

BOTTOM, FROM RIGHT: COURTESY OF SKYLAR MORGAN; JOHN MERKLE; COURTESY OF NENDO

Mario Ruiz  
for **Punt**



**product** Malmö  
**standout** Super-matte walnut envelops the Spaniard's cabinet, perched atop ultra-thin lacquered-steel legs; for added oomph, spec anodized-aluminum front and top panels in gold, bronze, or pale-rose finish mimicking precious metals. [puntmables.com](http://puntmables.com)

Ziad Alonaizy  
of **Ziad Alonaizy**



**product** Aegis-P  
**standout** The orthopedic surgeon-turned-interior designer applies precision to his cagelike art deco-inspired console incorporating galvanized braided-steel wire, solid brass, stainless steel, and marble. [alonaizy.com](http://alonaizy.com)

Vincent Tordjman  
for **Ligne Roset**



**product** Ennea  
**standout** Marble-effect stoneware tops the Paris-based scenographer/designer's dining table, its name the Greek word for "nine"—the number of points comprising the stained-oak base. [ligne-roset.com](http://ligne-roset.com)

Laine Foreman and Vajra Foreman  
of **Foreman Brothers**



**product** Lloyd  
**standout** Taking cues from (and the middle name of) FLW, a drinks cabinet in powder-coated steel and walnut features the L.A.-based brothers' jaunty leg design. [foremanbrothersdesign.com](http://foremanbrothersdesign.com)