



AEGIS COLLECTION  
ETERNAL ELEGANCE



Ziad Alonaizy

## ABOUT


Ziad Alonaizy design is a luxury-led and conceptually driven furniture atelier and design studio. The company's ethos is underpinned by a desire to create timeless and eternally elegant designs that transcend current market inclinations and provoke exceptional visual and emotional impact.

Founded by Ziad Alonaizy in 2018, the studio was established following the acclaimed launch of Ziad's debut collection of furniture – AEGIS. With a solid grounding in architectural interior design, the company now specialises in bespoke furniture, interior design and private commissions.

Driven by exceptional quality and an unwavering dedication to excellence, Ziad is passionate about a conceptual approach to his work that consistently delivers against client expectations and captures the essence of their vision.

***"I set myself the challenge to create a timeless and conversational design, born from my architectural background and quest for individuality."***





## Designed in London. Hand-crafted in Italy

Each of the pieces in our collection is produced by a family of metal artisans who have been perfecting their craft for generations. Based in a beautiful medieval town close to the Amalfi coast, the team pride themselves on working collaboratively with designers and architects to realise projects above and beyond expectations. Consistently looking to the future, they continue to research and develop cutting edge technologies whilst remaining dedicated to the core skills of their craft.

Every element of AEGIS furniture is assembled and finished by hand in a series of processes involving nine specially trained Italian artisans. Each piece is painstakingly sanded down to remove any welding marks whilst the metal finishes are achieved via a delicate sponging technique which prevents any drip waste and avoids any unnecessary damage to the environment. Braided steel wire is arduously threaded through the structural frames, with the same degree of care given to each and every commission. The love and pride which goes into the making of these pieces results in impeccable quality and a seamless finish. The ethos of 'eternal elegance' sits at the heart of the design and manufacturing process for every piece of AEGIS furniture – to be loved, treasured and passed on from one generation to the next.

## CONCEPT

Our inaugural furniture collection AEGIS was inspired by the concept of a bird cage being pried open by two fingers, metaphorically representing empowerment and the release of ideas and creativity. The seamless and sculptural form of the Aegis collection conceals a plethora of technical design detailing achieving complexity without compromise. Intrinsically elegant, the Aegis collection is handmade by our team of artisans in Italy and available in a myriad of finishes, shapes and sizes aligned to both classic and contemporary aesthetics.





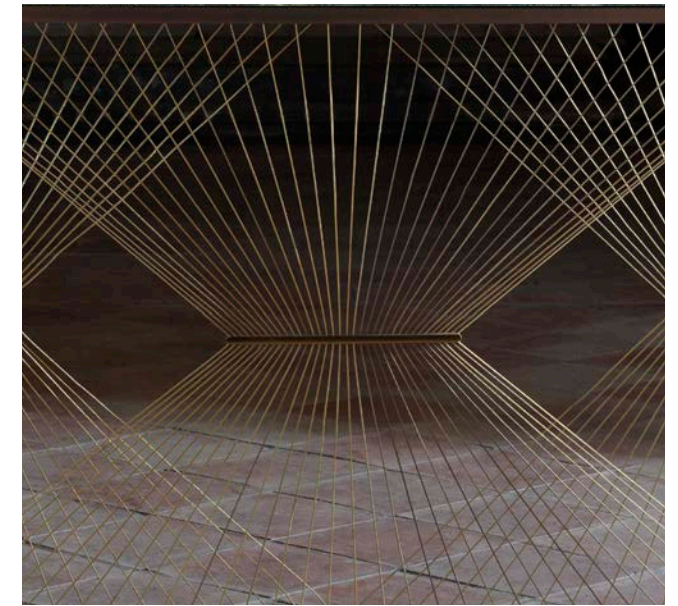
Console	6 - 7
Coffee	8 - 9
Side	10 - 20
Mirror	21 - 22
Materials & Finishes	23 - 26

## AEGIS - P Console table

Our best seller, the AEGIS - P console table is suitable for entry halls, lobbies, living rooms or dining spaces. The perfect height behind a sofa or a stunning focal point in a dining room. The unique design of the console enables display from both the front or back with an exquisite lattice structure that delicately bounces light across the wires.



Golden lighting marble top with pink steel frame



Size	Code	cm		in		kg
Small	Aegis - P/S	116 x 32	h 84	45.8 x 12.8	h 33.3	52
Medium	Aegis - P/M	128 x 36	h 84	50.5 x 14.3	h 33.3	58
Large	Aegis - P/L	141 x 40	h 84	55.8 x 15.8	h 33.3	64

**Materials** Frame: Solid stainless steel or steel, Top: marble, Wires: galvanised stainless steel, Clips: solid brass

**Finishes** Classic only

## AEGIS - C

Coffee table

The AEGIS coffee table strikes the perfect balance between practicality and aesthetic elegance. With a show-stopping oval form the table feels like a work of art and is sure to draw attention with its classic marble and metal finishes.



Coffee brown marble top with blackened steel frame





Size	Code	cm		in		kg
Small	Aegis - C/S	112 x 60	h 44	44.0 x 23.8	h 17.5	50
Medium	Aegis - C/M	124 x 70	h 44	49.0 x 27.5	h 17.5	54
Large	Aegis - C/L	136 x 80	h 44	53.5 x 31.5	h 17.5	59

**Materials** Frame: Solid stainless steel or steel, Top: stone, Wires: galvanised stainless steel, Clips: solid brass

**Finishes** Classic only

## AEGIS SIDE TABLES

AEGIS side tables are available in both square and oval form – as singular pieces or a nesting set. Ideally positioned beside a sofa, they are the perfect height to serve drinks or to position a table lamp. Elegant galvanised wire detailing is sure to create a conversation piece.



AEGIS - O  
Oval side table

With soft curves and sophisticated lines, our AEGIS oval side tables are a beautiful complement to both modern and traditional settings.



Vireo contemporary colour combination



Size	Code	cm		in		kg
Small	Aegis - O/S	55 x 26	h 50	21.8 x 10.3	h 19.8	19
Medium	Aegis - O/M	64 x 30	h 50	25.3 x 12.0	h 19.8	23
Large	Aegis - O/L	73 x 34	h 50	28.8 x 13.5	h 19.8	29

**Materials** Frame: Solid steel or stainless steel, Top: stone or glass, Wires: galvanised stainless steel, Clips: solid brass or stainless steel

**Finishes** Classic or Contemporary

## AEGIS - S

### Square side table

Refined with an elegant edge, our AEGIS square tables are available in 3 sizes to fit a multitude of spaces and schemes.





Size	Code	cm		in		kg
Small	Aegis - S/S	41 x 41	h 50	16.3 x 16.3	h 19.8	14
Medium	Aegis - S/M	50 x 50	h 50	19.8 x 19.3	h 19.8	20
Large	Aegis - S/L	59 x 59	h 50	23.3 x 23.3	h 19.8	25

**Materials** Frame: Steel or stainless steel, Top: stone or glass, Wires: galvanised stainless steel, Clips: solid brass or stainless steel

**Finishes** Classic or Contemporary

## AEGIS - MTO

### Oval Martini table

Taking inspiration from the distinctive curves of Art Deco design, our oval Martini tables provide a nod to 1920's hedonism and are perfectly proportioned for serving drinks.



Quetzal contemporary colour combination



Size	Code	cm		in		kg
Small	Aegis - MTO/S	44 x 22	h 60	17.5 x 8.8	h 23.8	15
Medium	Aegis - MTO/M	47 x 24	h 60	18.5 x 9.5	h 23.8	19
Large	Aegis - MTO/L	50 x 26	h 60	19.8 x 10.8	h 23.8	25

**Materials** Frame: Solid steel or stainless steel, Top: stone or glass, Wires: galvanised stainless steel, Clips: solid brass or stainless steel

**Finishes** Classic or Contemporary



## AEGIS - MTS

### Square Martini table

Sharp lines and linear wire detailing embody sophistication in our AEGIS square Martini tables – the perfect addition to an elegant entertainment space.



Parakeet contemporary colour combination



Size	Code	cm		in		kg
Small	Aegis - MTS/S	29 x 29	h 60	11.5 x 11.5	h 23.8	9
Medium	Aegis - MTS/M	35 x 35	h 60	13.8 x 13.8	h 23.8	13
Large	Aegis - MTS/L	41 x 41	h 60	16.3 x 16.3	h 23.8	18

**Materials** Frame: Steel or stainless steel, Top: stone or glass, Wires: galvanised stainless steel, Clips: solid brass or stainless steel

**Finishes** Classic or Contemporary

## AEGIS - 001

### Nesting side tables

The flexibility of the AEGIS nesting tables allows them to be repositioned and placed to serve individual guests where a coffee table is impractical or absent. The nesting tables are available in 3 different combinations: Small & medium; medium & large and a 3 piece set comprising one small, one medium and one large.



Guatamala Verde marble top with blackened steel frame



Size	Code	cm		in		kg
Small	Aegis 001/S	38 x 48	h 48	15.0 x 19.0	h 19.0	13
Medium	Aegis 001/M	43 x 52	h 52	17.0 x 20.5	h 20.5	15
Large	Aegis 001/L	48 x 56	h 56	19.0 x 22.0	h 22.0	18
X2 Medium	Aegis 001/T2	S + M	h 52	S + M	h 20.5	28
X2 Large	Aegis 001/T3	M + L	h 56	M + L	h 22.0	33
x3	Aegis 001/T1	S + M + L	h 56	S + M + L	h 22.0	46

**Materials** Frame: Steel or stainless steel, Top: stone or glass, Wires: galvanised stainless steel, Clips: solid brass or stainless steel

**Finishes** Classic or Contemporary



## AEGIS - M

### Wall mirror

The AEGIS - M wall mirror sits proudly outside of its frame and can be positioned both vertically and horizontally in a myriad of spaces. The distinctive Aegis braided wire crosses both the back and the front of the mirror facilitating admiration from any angle. A playful selection of tinted glass options make way for a variety of looks suited to different colour palettes and schemes.



Size	Code	cm		in		kg
O/S	Aegis - M	122 x 3	h 78	48.0 x 0.8	h 30.8	18

**Materials** Frame: Stainless steel or steel, Glass mirror, Wires: galvanised stainless steel

**Finishes** Classic only

\*Please note that there are 4 hidden hooks incorporated within the frame for both vertical and horizontal hanging with full installation instructions provided.

## MATERIALS and FINISHES

All of our furniture is made to order and can be customised within reason and according to availability \*. Illustrated are our standard library of finishes defined by two distinctive aesthetics – classic and contemporary. Sourced with a discerning passion, our classic finishes capture the essence of vintage decadence whilst our contemporary finishes are comprised of exquisite innovative materials with colour combinations inspired by exotic birds.

Our classic metal finishes have been developed using a unique patented process that evolves on application and over time, thereby allowing the piece to gain character and individuality.

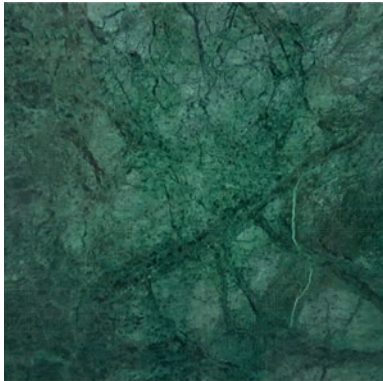
Our Contemporary table tops are produced using 100% fused recycled glass. Utilising surplus defective glass bottles this stylish finish contains no glue or chemicals and is free from resin. It's also easy to clean, resistant to weathering, 100% non-porous and virtually scratch and stain-resistant. Frames for our glass-top pieces have been RAL matched in a gloss finish with a new contrasting chrome/nickel wire and clips which complete this alluring contemporary design.

Please see individual product listings for available finishes or contact us for bespoke enquiries.

\*please note that additional charges apply for bespoke finishes

## OUR CLASSIC FINISHES

### Marble top



VERDE GUATEMALA



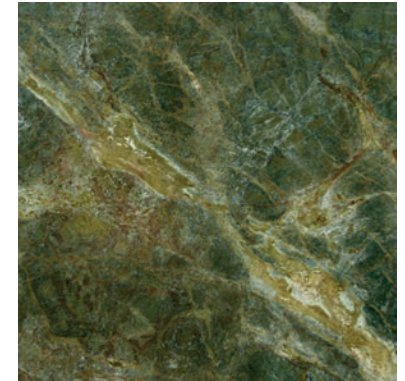
EGEO ROSA



MARQUINA NERO

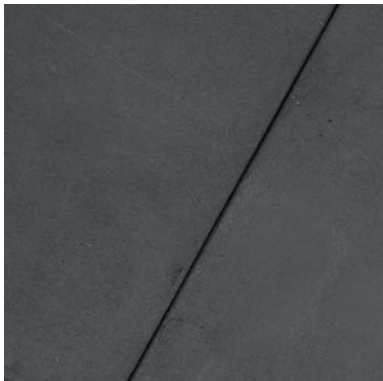


COFFEE BROWN



GOLDEN LIGHTING

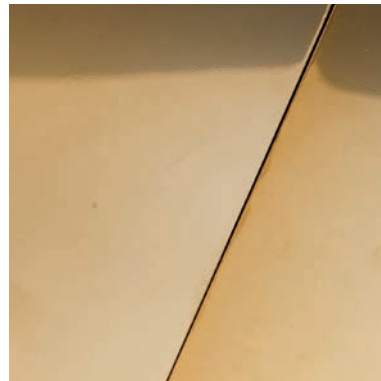
### Metal frame



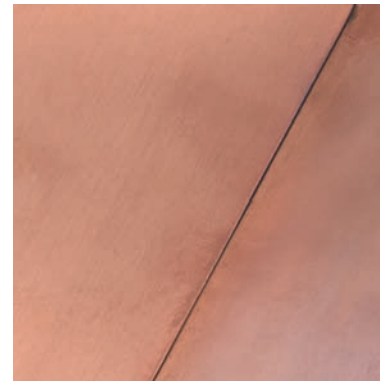
BLACKENED STEEL



SATIN VINTAGE GOLD



POLISHED VINTAGE GOLD



PINK STEEL



BRONZED STEEL

### Wires



GOLD FINISH

### Clips



POLISHED SOLID BRASS

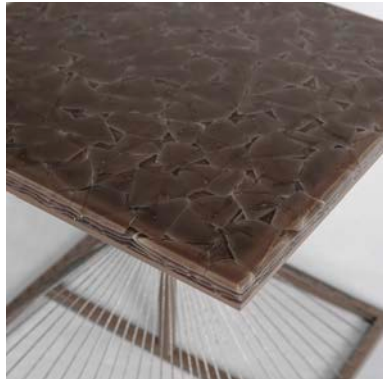


# OUR CONTEMPORARY FINISHES

## Colour Combinations



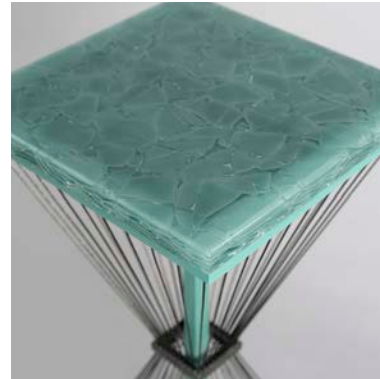
QUETZAL RAL 5026



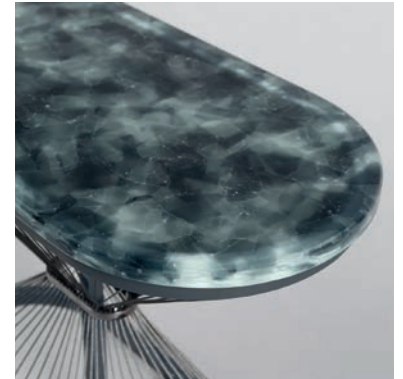
PHOEBE RAL 8014



VIREO RAL 7016

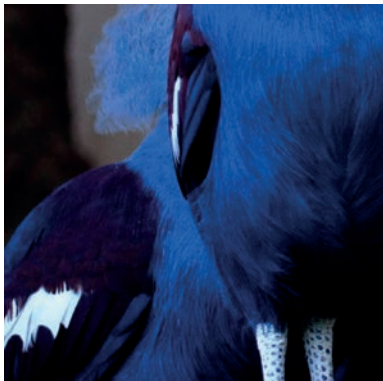


PARAKEET RAL 6000



TANAGER RAL 5008

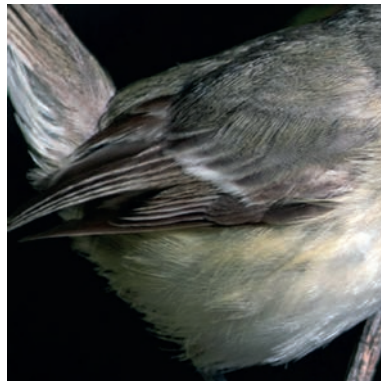
## Inspired by



RESPLENDENT QUETZAL



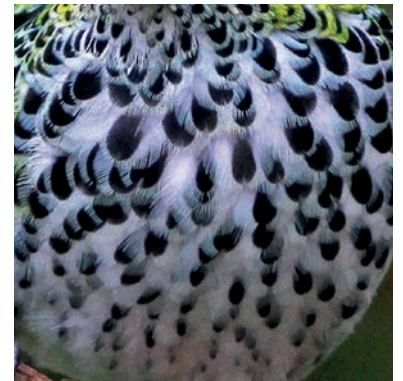
SAY'S PHOEBE



BELL'S VIREO



GOLDEN-PLUMED PARAKEET



SPECKLED TANAGER

## Wires



CHROME/NICKEL FINISH

## Clips



CHROME/NICKEL FINISH

## OUR MIRROR FINISHES

### Glass mirror



ROSE TINTED

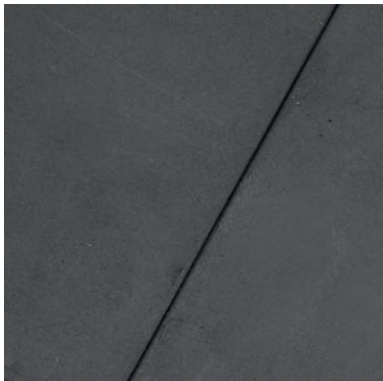


BRONZE TINTED



NORMAL

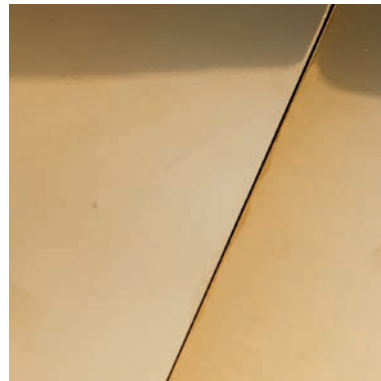
### Metal frame



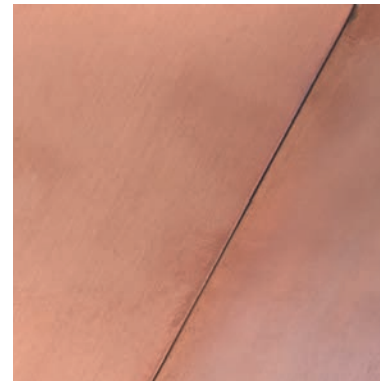
BLACKENED STEEL



SATIN VINTAGE GOLD



POLISHED VINTAGE GOLD



PINK STEEL



BRONZED STEEL

### Wires



GOLD FINISH

## OUR TERMS & CONDITIONS

- Lead times are 8-12 weeks, depending on item and excluding holidays or factory closures. These include two weeks in August and three weeks over Christmas and the New Year.
- Images are a good representation of each product, however, due to the use of natural materials and extensive hand made nature of these items, minor variations are to be expected.
- Customisation of finishes is possible. Contact us for further information. There is a non-negotiable 30% surcharge for finishes not within our catalogue or variations there of.
- We charge an upfront fee for technical drawings for custom sizes or pieces.
- Orders are generated upon receipt of a detailed purchase order or name and signature on both relevant specification and quotation.
- Orders are only processed upon receipt of a non-refundable deposit for trade clients or full amount for non-trade clients.
- Items are packaged within custom-made heavy solid wooden crates before shipping and will require professional help in un-crating the pieces and disposal of any debris according to local regulation.
- Delivery costs are quoted separately according to number of items, type of delivery and delivery address.



Ziad Alonaizy

[www.alonaizy.com](http://www.alonaizy.com)

[info@alonaizy.com](mailto:info@alonaizy.com)

+44 (0) 20 3724 1918

All images, sketches, drawings or illustrations, patentable ideas and designs, marketing, and current or future business plans, relative designs and models, regardless of whether such information is designated as "Confidential Information" at the time of its disclosure is strictly the property of Ziad Alonaizy Design Ltd and is considered private, confidential and not to be shared, copied or reproduced by any other party without the written permission of Ziad Alonaizy Design Ltd in accordance with UK's 'design right'.and EU's Unregistered Community Designs Law.